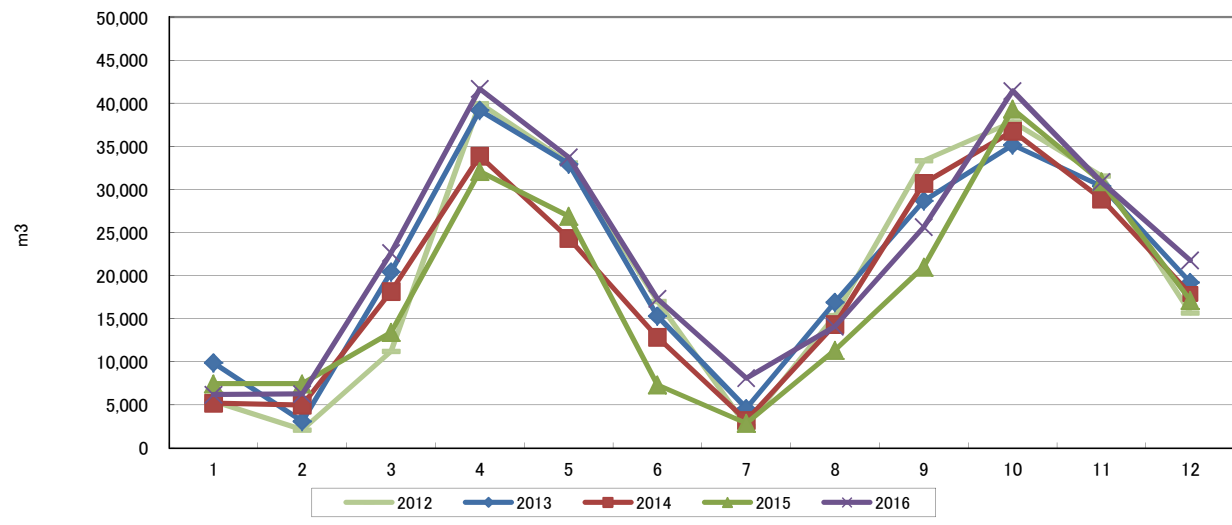


ガス使用量比較表(平成22年度～平成28年度)

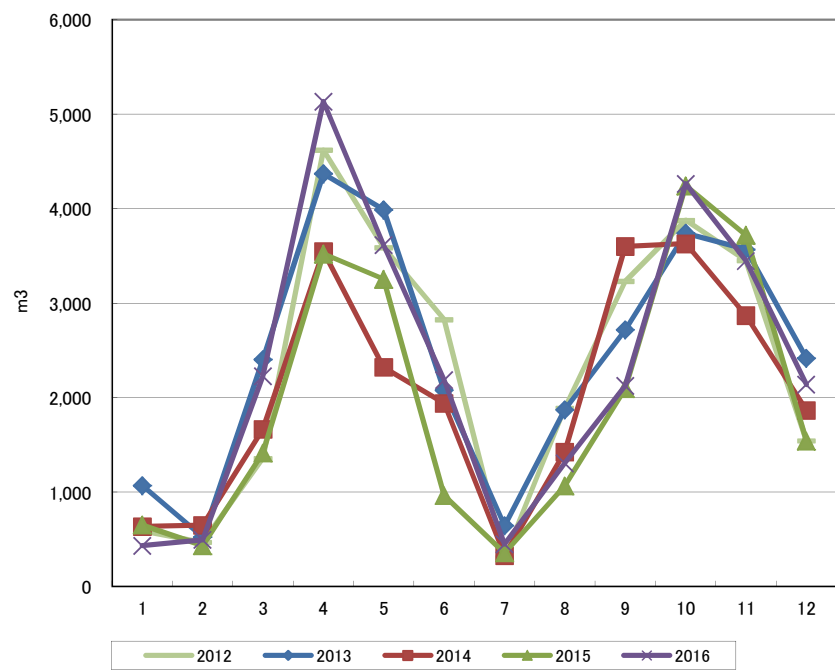
[単位:m]

区分	年度	4月	5月	6月	7月	8月	9月	10月	11月	12月	1月	2月	3月	合計	
	川津キャンパス	共通	2010	1,594	716	2,540	5,618	6,115	2,938	790	2,528	4,917	9,112	5,679	5,162
		2011	1,782	320	2,308	5,219	4,905	2,419	480	1,436	4,522	6,891	6,166	4,324	40,772
		2012	893	473	2,497	5,857	5,198	2,587	460	2,453	5,604	6,771	5,750	2,979	41,522
		2013	1,481	704	3,503	6,199	5,629	2,630	1,005	2,184	4,030	4,795	4,339	2,807	39,306
		2014	721	1,172	2,903	5,177	3,879	2,000	516	2,026	4,484	5,039	4,185	2,600	34,702
		2015	1,077	1,438	2,396	5,278	4,645	1,330	520	1,417	3,130	5,886	4,858	2,835	34,810
		2016	740	1,052	4,100	6,860	5,625	2,907	1,412	1,685	3,361	5,751	4,412	3,170	41,075
	法文学部	2010	2,861	201	2,781	7,615	8,377	3,510	264	4,579	6,933	11,554	7,231	5,829	61,735
		2011	2,579	275	3,310	7,384	6,131	2,814	202	2,108	7,474	10,824	8,474	5,971	57,546
		2012	1,513	99	1,282	8,990	7,080	3,654	0	3,698	8,532	9,217	7,957	4,617	56,639
		2013	3,079	0	3,505	8,242	6,664	2,778	8	4,507	7,797	9,482	8,170	5,687	59,919
		2014	1,461	11	2,988	6,677	4,516	2,009	8	3,598	7,930	9,978	7,499	5,103	51,778
		2015	2,181	257	1,149	6,632	5,474	1,054	193	2,857	6,427	10,662	8,502	5,054	50,442
		2016	2,245	171	3,633	9,024	7,347	3,319	1,146	4,938	8,155	11,686	8,608	6,493	66,765
	教育学部	2010	3,170	1,088	6,689	14,601	15,805	6,924	1,909	4,441	8,795	16,352	9,676	7,827	97,277
		2011	2,942	747	7,148	13,876	12,268	5,748	1,040	2,473	8,962	13,646	11,108	7,283	87,241
		2012	1,530	944	5,027	17,077	14,419	6,841	991	4,945	10,903	12,713	10,636	4,973	90,999
		2013	2,849	1,487	9,032	16,542	13,769	6,206	2,131	5,879	10,174	12,311	10,753	6,630	97,763
		2014	1,561	2,322	7,480	14,099	10,020	5,158	1,205	4,702	10,993	12,843	10,299	5,989	86,671
		2015	2,253	3,784	6,648	13,553	11,377	3,048	1,196	4,079	7,057	13,680	10,647	5,726	83,048
		2016	1,749	4,106	10,795	17,598	13,876	6,979	3,541	4,526	8,715	14,916	11,237	7,484	105,522
	総合理工学部	2010	1,982	544	2,405	6,644	7,483	3,748	1,162	3,179	5,445	10,416	5,501	4,125	52,634
		2011	1,589	708	3,932	7,153	6,016	3,207	818	1,967	5,235	8,731	6,631	4,272	50,259
		2012	1,103	489	2,353	8,000	6,359	3,884	980	3,472	6,932	7,662	6,063	2,643	49,940
		2013	2,028	787	4,329	8,134	6,854	3,613	1,304	3,566	5,388	7,315	6,106	3,527	52,951
		2014	1,113	1,359	4,712	7,849	5,867	3,644	1,339	3,392	6,199	7,790	5,958	3,432	52,654
		2015	1,516	1,865	3,146	6,564	5,328	1,841	820	2,513	3,467	7,832	5,764	2,815	43,471
		2016	1,127	824	4,035	8,128	6,829	4,031	1,876	2,394	4,616	7,960	5,636	3,887	51,343
	生物資源科学部	2010	743	188	118	96	62	85	195	896	1,513	2,247	1,627	1,400	9,170
		2011	649	142	105	82	60	106	141	499	1,685	2,441	2,468	1,618	9,996
		2012	408	111	73	58	45	69	130	822	1,378	1,484	1,176	463	6,217
		2013	453	125	69	54	51	89	149	794	1,275	1,282	1,031	570	5,942
		2014	364	132	100	82	59	63	135	626	1,099	1,124	975	732	5,491
		2015	426	109	80	66	61	58	140	492	931	1,260	1,132	703	5,458
		2016	333	123	78	69	53	68	128	566	771	1,118	972	745	5,024
	小計	2010	10,350	2,737	14,533	34,574	37,842	17,205	4,320	15,623	27,603	49,681	29,714	24,343	268,525
		2011	9,541	2,192	16,803	33,714	29,380	14,294	2,681	8,483	27,878	42,533	34,847	23,468	245,814
		2012	5,447	2,116	11,232	39,982	33,101	17,035	2,561	15,390	33,349	37,847	31,582	15,675	245,317
		2013	9,890	3,103	20,438	39,171	32,967	15,316	4,597	16,930	28,664	35,185	30,399	19,221	255,881
		2014	5,220	4,996	18,183	33,884	24,341	12,874	3,203	14,344	30,705	36,774	28,916	17,856	231,296
		2015	7,453	7,453	13,419	32,093	26,885	7,331	2,869	11,358	21,012	39,320	30,903	17,133	217,229
		2016	6,194	6,276	22,641	41,679	33,730	17,304	8,103	14,109	25,618	41,431	30,865	21,779	269,729
本庄農場		2010	77.4	8.5	3.7	2.5	2.0	80.3	2.8	168.8	349.7	291.6	304.7	174.9	1,466.9
		2011	174.9	51.4	65.8	3.1	1.9	1.9	1.1	45.2	14.3	174.7	297.5	520.9	1,352.7
		2012	42.0	2.6	4.0	2.6	1.4	71.7	2.2	187.4	233.6	247.8	243.9	113.7	1,152.9
		2013	222.9	8.8	3.2	3.0	27.9	2.0	2.2	66.5	383.6	223.6	247.8	162.4	1,353.9
		2014	30.5	5.3	2.6	2.5	2.1	95.7	2.4	58.1	394.1	228.1	387.9	204.9	1,414.2
		2015	71.3	65.2	2.9	2.4	1.9	2.6	3.8	131.5	103.2	266.6	167.2	108.0	926.6
		2016	18.4	3.4	1.7	112.8	2.2	2.5	2.1	42.7	231.6	186.3	400.2	155.3	1,159.2
附属学校		2010	990.0	353	1,422	3,376	4,039	2,738	457	1,414	2,552	4,292	3,091	2,735	27,459
		2011	842	425	1,570	3,468	2,634	1,924	327	858	2,357	4,041	4,152	2,395	24,993
		2012	591	469	1,357	4,622	3,591	2,828	308	1,891	3,233	3,878	3,453	1,544	27,765
		2013	1,070	525	2,403	4,371	3,989	2,080	645	1,874	2,718	3,741	3,570	2,417	29,403
		2014	636	650	1,666	3,548	2,322	1,940	328	1,425	3,602	3,630	2,870	1,865	24,482
		2015	652	433	1,415	3,523	3,255	964	357	1,067	2,097	4,244	3,721	1,540	23,268
		2016	432	496	2,227	5,135	3,615	2,189	451	1,307	2,128	4,265	3,447	2,139	27,831

ガス消費量(川津)



ガス消費量(附属学校)



ガス消費量(本庄農場)

