

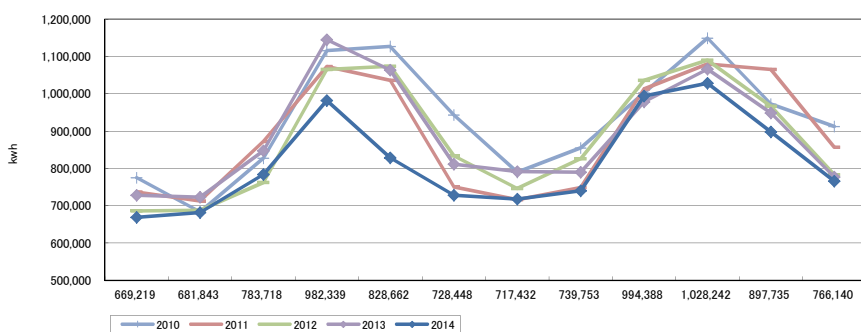
電力使用量比較表(平成22年度～平成26年度)

※「共通小計」の詳細については、別添掲載の「建物別使用量内訳書」で確認ください。

[単位:Kwh]

区分	年度	4月	5月	6月	7月	8月	9月	10月	11月	12月	1月	2月	3月	合計	
川津キャンパス	共通小計	2010	210,479	187,069	222,227	308,872	299,620	236,436	199,176	213,664	252,234	294,387	250,991	242,223	2,917,378
		2011	203,348	194,035	239,349	296,056	286,648	211,967	190,668	195,280	264,677	276,013	275,551	219,956	2,853,548
		2012	187,662	185,809	199,153	281,441	301,113	196,030	189,061	205,178	239,458	249,608	220,930	202,369	2,657,812
		2013	199,178	200,290	224,980	315,173	271,248	201,211	221,900	204,781	230,089	256,041	214,404	182,050	2,721,345
		2014	182,306	192,251	220,267	272,713	213,207	188,759	199,478	199,800	266,764	268,938	234,280	208,760	2,647,523
	法文学部棟	2010	27,200	22,648	26,031	30,417	26,761	24,098	26,745	29,348	33,114	36,636	31,118	27,792	341,908
		2011	26,019	22,685	25,878	30,066	26,809	22,996	25,041	25,893	33,318	35,872	33,841	26,805	335,223
		2012	24,210	23,768	24,103	29,446	25,330	22,245	24,882	29,650	33,762	35,939	31,595	24,888	329,818
		2013	26,114	22,737	25,176	30,421	24,624	20,665	25,635	28,085	34,611	35,681	32,079	26,597	332,425
		2014	24,459	22,230	25,246	28,784	22,985	20,731	24,213	26,629	34,048	35,313	29,354	24,748	318,740
	教育学部棟	2010	63,750	56,217	67,144	74,412	67,537	61,120	65,125	67,278	75,161	80,627	69,227	67,017	814,615
		2011	59,694	57,076	63,239	69,550	66,029	55,377	57,048	60,352	73,369	77,506	76,598	61,895	777,733
		2012	57,928	57,630	61,999	74,503	66,949	59,576	62,290	67,010	78,707	82,081	74,888	59,198	802,759
		2013	61,204	59,784	64,899	77,226	68,407	59,214	67,711	73,665	90,831	92,521	83,128	72,892	871,482
		2014	60,645	62,239	67,186	76,236	62,500	57,327	61,658	61,401	78,065	79,618	70,089	62,180	799,144
総合理工学部2号館	2010	19,794	16,630	22,538	52,084	52,510	41,213	22,592	45,897	55,670	66,497	53,781	47,144	496,350	
	2011	24,312	26,865	40,893	48,671	34,954	34,849	31,129	24,915	49,755	57,367	56,455	47,355	477,520	
	2012	23,710	30,639	35,493	52,971	56,197	45,026	21,490	39,264	61,894	65,761	54,679	38,791	525,915	
	2013	19,828	21,589	40,328	48,376	50,064	38,290	20,790	30,492	57,422	61,320	57,754	31,135	477,388	
	2014	32,196	40,498	46,363	60,789	49,122	26,613	22,709	34,630	51,859	55,974	40,933	21,972	483,658	
総合理工学部1号館	2010	75,758	68,175	79,311	99,777	91,681	83,427	78,723	86,310	93,433	102,193	87,448	72,618	1,018,854	
	2011	71,232	74,068	82,158	93,830	86,372	74,332	77,545	76,362	90,068	94,195	97,299	73,830	991,291	
	2012	71,010	75,344	81,625	99,921	89,953	77,986	80,169	82,126	93,715	98,710	89,373	72,737	1,012,669	
	2013	75,120	76,803	81,463	99,410	88,022	77,385	80,456	81,371	95,006	100,057	95,636	78,697	1,029,426	
	2014	75,349	77,800	85,692	102,003	86,135	80,076	88,188	89,999	108,112	110,381	100,217	85,508	1,089,460	
総合理工学部3号館(材プロ含)	2010	169,717	148,955	188,091	262,078	270,570	236,921	188,437	192,047	223,300	263,068	227,747	215,937	2,586,868	
	2011	159,708	152,444	190,881	252,440	244,432	115,311	128,355	156,347	222,894	244,215	244,130	195,700	2,306,857	
	2012	146,012	141,174	164,486	251,648	250,882	201,277	162,898	169,570	234,076	255,861	230,308	176,063	2,384,255	
	2013	158,036	152,553	194,873	267,839	261,188	191,531	164,316	159,992	202,703	221,280	206,465	169,459	2,350,235	
	2014	117,554	115,462	139,171	183,276	164,142	143,599	134,733	132,396	181,886	191,486	178,313	149,880	1,831,898	
生物資源科学部2.3号館	2010	100,911	84,676	100,473	128,260	139,379	111,499	86,979	91,845	113,468	137,178	108,366	100,912	1,303,946	
	2011	83,815	75,954	102,067	120,494	126,990	100,143	90,803	89,607	120,685	132,466	121,221	92,740	1,256,985	
	2012	75,438	68,591	77,136	110,142	110,117	94,033	87,647	103,731	130,493	128,326	111,521	85,024	1,182,199	
	2013	83,738	78,718	82,866	122,732	115,567	83,669	89,980	94,191	114,600	127,227	105,838	84,219	1,183,345	
	2014	80,707	71,892	89,197	122,370	108,991	95,812	83,753	95,160	134,216	139,844	120,164	103,345	1,245,451	
生物資源科学部1号館	2010	108,138	99,024	121,627	160,240	178,645	148,803	122,103	128,883	156,258	169,064	144,403	138,574	1,675,762	
	2011	108,433	109,177	127,641	162,308	163,858	135,895	115,136	119,781	158,160	162,592	160,024	138,567	1,661,572	
	2012	100,080	105,173	118,096	165,000	173,752	137,321	117,334	129,197	164,406	173,553	153,379	123,942	1,661,233	
	2013	105,216	110,542	132,728	184,051	184,486	139,485	120,702	117,593	153,061	172,459	153,536	131,789	1,705,648	
	2014	96,003	99,471	110,596	136,168	121,580	115,531	102,700	99,738	139,438	146,688	124,385	109,747	1,402,045	
小計	2010	775,747	683,394	827,442	1,116,140	1,126,703	943,517	789,880	855,272	1,002,638	1,149,650	973,081	912,217	11,155,681	
	2011	736,561	712,304	872,106	1,073,415	1,036,092	750,870	715,725	748,537	1,012,926	1,080,226	1,065,119	856,848	10,660,729	
	2012	686,050	688,128	762,091	1,065,072	1,074,293	833,494	745,771	825,726	1,036,511	1,089,839	966,673	783,012	10,556,660	
	2013	728,434	723,016	847,313	1,145,228	1,063,606	811,450	791,490	790,170	978,323	1,066,586	948,840	776,838	10,671,294	
	2014	669,219	681,843	783,718	982,339	828,662	728,448	717,432	739,753	994,388	1,028,242	897,735	766,140	9,817,919	
本庄農場	2010	16,003	14,283	18,090	23,061	26,670	22,056	23,426	24,590	32,457	30,007	25,455	27,786	283,884	
	2011	16,147	16,111	22,516	24,789	34,373	25,826	21,410	21,991	23,104	18,359	16,083	13,820	254,529	
	2012	13,389	15,860	18,650	25,788	29,968	19,300	18,948	21,686	23,527	25,043	19,186	17,502	248,847	
	2013	19,238	18,840	17,651	27,695	31,066	20,489	20,069	18,374	19,511	16,253	13,722	12,221	235,129	
	2014	12,563	14,744	16,398	22,870	21,168	18,499	18,460	17,509	19,313	17,102	15,682	16,241	210,649	
附属学校	2010	29,926	32,844	35,976	37,155	31,130	38,852	33,108	33,752	39,973	42,642	42,350	39,607	437,315	
	2011	27,072	30,438	33,632	35,213	27,547	35,990	32,773	31,814	37,909	40,866	44,076	38,010	415,340	
	2012	27,360	33,024	33,499	37,668	28,183	35,724	32,395	34,806	39,199	42,811	43,254	37,398	425,321	
	2013	30,216	32,413	35,466	37,602	29,047	38,292	36,882	37,441	41,706	40,386	41,148	36,966	437,565	
	2014	27,356	29,772	33,978	33,642	25,495	33,541	31,755	32,290	39,559	38,867	37,973	35,729	399,957	

電力消費量(川津)



電力消費量(附属学校)

