

水使用量比較表(平成22年度～平成26年度)

1. 井水使用量

[単位:m³]

| | 区分 | 年度 | 4・5月 | 6・7月 | 8・9月 | 10・11月 | 12・1月 | 2・3月 | 合計 |
|-------------|---------|--------|--------|--------|--------|--------|--------|---------|--------|
| 川津 キャンパス | 共通 | 2010 | 8,452 | 9,698 | 9,293 | 9,034 | 7,342 | 6,566 | 50,385 |
| | | 2011 | 8,604 | 11,377 | 10,922 | 10,801 | 8,701 | 6,652 | 57,057 |
| | | 2012 | 8,508 | 10,813 | 8,878 | 13,511 | 6,937 | 4,522 | 53,169 |
| | | 2013 | 5,601 | 5,768 | 2,710 | 2,174 | 0 | 1,731 | 17,984 |
| | | 2014 | 6,691 | 5,892 | 6,473 | 7,599 | 9,167 | 6,190 | 42,012 |
| | 法文学部 | 2010 | 244 | 453 | 299 | 483 | 464 | 350 | 2,293 |
| | | 2011 | 394 | 405 | 302 | 450 | 430 | 325 | 2,306 |
| | | 2012 | 396 | 520 | 707 | 1,307 | 1,079 | 366 | 4,375 |
| | | 2013 | 375 | 379 | 291 | 455 | 444 | 1,283 | 3,227 |
| | | 2014 | 387 | 407 | 301 | 427 | 428 | 321 | 2,271 |
| | 教育学部 | 2010 | 872 | 1,013 | 649 | 946 | 849 | 611 | 4,940 |
| | | 2011 | 843 | 929 | 725 | 880 | 832 | 705 | 4,914 |
| | | 2012 | 920 | 1,069 | 802 | 1,121 | 1,155 | 1,039 | 6,106 |
| | | 2013 | 1,491 | 1,792 | 1,638 | 1,638 | 1,292 | 886 | 8,737 |
| | | 2014 | 1,208 | 1,173 | 828 | 933 | 979 | 729 | 5,850 |
| | 総合理工学部 | 2010 | 3,677 | 4,674 | 2,747 | 3,348 | 3,309 | 2,776 | 20,531 |
| | | 2011 | 3,168 | 5,114 | 4,855 | 5,147 | 4,824 | 3,379 | 26,487 |
| | | 2012 | 3,461 | 4,247 | 7,192 | 5,819 | 3,342 | 2,601 | 26,662 |
| | | 2013 | 3,335 | 3,663 | 5,182 | 2,156 | 5,360 | 2,381 | 22,077 |
| | | 2014 | 3,066 | 3,114 | 3,618 | 4,334 | 3,777 | 2,557 | 20,466 |
| | 生物資源科学部 | 2010 | 1,155 | 2,343 | 2,785 | 1,948 | 2,208 | 1,595 | 12,034 |
| | | 2011 | 2,519 | 2,810 | 2,382 | 2,441 | 2,501 | 2,223 | 14,876 |
| | | 2012 | 2,115 | 2,757 | 2,343 | 2,710 | 2,197 | 2,141 | 14,263 |
| | | 2013 | 2,384 | 3,258 | 2,110 | 2,411 | 2,124 | 1,535 | 13,822 |
| | | 2014 | 2,115 | 2,238 | 1,906 | 1,792 | 1,587 | 1,269 | 10,907 |
| 小計 | 2010 | 14,400 | 18,181 | 15,773 | 15,759 | 14,172 | 11,898 | 90,183 | |
| | 2011 | 15,528 | 20,635 | 19,186 | 19,719 | 17,288 | 13,284 | 105,640 | |
| | 2012 | 15,400 | 19,406 | 19,922 | 24,468 | 14,710 | 10,669 | 104,575 | |
| | 2013 | 13,186 | 14,860 | 11,931 | 8,834 | 9,220 | 7,816 | 65,847 | |
| | 2014 | 13,467 | 12,824 | 13,126 | 15,085 | 15,938 | 11,066 | 81,506 | |

2. 市水使用量

[単位:m³]

| | 区分 | 年度 | 4・5月 | 6・7月 | 8・9月 | 10・11月 | 12・1月 | 2・3月 | 合計 |
|-------------|---------|------|-------|-------|-------|--------|--------|-------|--------|
| 川津 キャンパス | 共通 | 2010 | 51 | 43 | 31 | 107 | 431 | 2,752 | 3,415 |
| | | 2011 | 698 | 647 | 615 | 751 | 1,175 | 1,407 | 5,293 |
| | | 2012 | 1,072 | 1,060 | 954 | 1,081 | 1,386 | 1,629 | 7,182 |
| | | 2013 | 1,682 | 1,478 | 1,347 | 7,705 | 11,878 | 17 | 24,107 |
| | | 2014 | 21 | 30 | 24 | 41 | 34 | 23 | 173 |
| | 教育学部 | 2010 | 39 | 63 | 39 | 89 | 98 | 26 | 354 |
| | | 2011 | 60 | 77 | 43 | 74 | 167 | 103 | 524 |
| | | 2012 | 221 | 96 | 135 | 307 | 313 | 278 | 1,350 |
| | | 2013 | 254 | 264 | 571 | 492 | 716 | 714 | 3,011 |
| | | 2014 | 730 | 946 | 853 | 409 | 668 | 450 | 4,056 |
| | 総合理工学部 | 2010 | 696 | 1,311 | 796 | 859 | 572 | 361 | 4,595 |
| | | 2011 | 597 | 766 | 802 | 828 | 1,027 | 584 | 4,604 |
| | | 2012 | 689 | 945 | 846 | 790 | 681 | 572 | 4,523 |
| | | 2013 | 540 | 958 | 941 | 1,119 | 635 | 381 | 4,574 |
| | | 2014 | 610 | 574 | 456 | 732 | 542 | 288 | 3,202 |
| | 生物資源科学部 | 2010 | 1,751 | 2,039 | 1,941 | 2,006 | 1,903 | 1,459 | 11,099 |
| | | 2011 | 1,467 | 1,588 | 1,588 | 1,789 | 1,683 | 1,723 | 9,838 |
| | | 2012 | 1,009 | 1,632 | 1,591 | 1,658 | 1,582 | 1,150 | 8,622 |
| | | 2013 | 1,392 | 1,583 | 1,805 | 1,662 | 1,490 | 905 | 8,837 |
| | | 2014 | 1,195 | 1,550 | 1,422 | 1,749 | 1,554 | 1,202 | 8,672 |

| | | | | | | | | |
|------|------|-------|-------|-------|--------|--------|-------|--------|
| 小計 | 2010 | 2,537 | 3,456 | 2,807 | 3,061 | 3,004 | 4,598 | 19,463 |
| | 2011 | 2,822 | 3,078 | 3,048 | 3,442 | 4,052 | 3,817 | 20,259 |
| | 2012 | 2,991 | 3,733 | 3,526 | 3,836 | 3,962 | 3,629 | 21,677 |
| | 2013 | 3,868 | 4,283 | 4,664 | 10,978 | 14,719 | 2,017 | 40,529 |
| | 2014 | 2,556 | 3,100 | 2,755 | 2,931 | 2,798 | 1,963 | 16,103 |
| 附属学校 | 2010 | 1,566 | 3,336 | 1,694 | 1,761 | 1,647 | 1,586 | 11,590 |
| | 2011 | 1,513 | 3,652 | 1,535 | 1,545 | 1,625 | 1,632 | 11,502 |
| | 2012 | 1,837 | 2,018 | 1,388 | 1,466 | 1,428 | 1,436 | 9,573 |
| | 2013 | 1,425 | 2,446 | 1,405 | 1,611 | 1,611 | 1,436 | 9,934 |
| | 2014 | 1,448 | 3,119 | 1,219 | 1,505 | 1,603 | 1,599 | 10,493 |

…井水のポンプが破損したため市水利用量が増加した

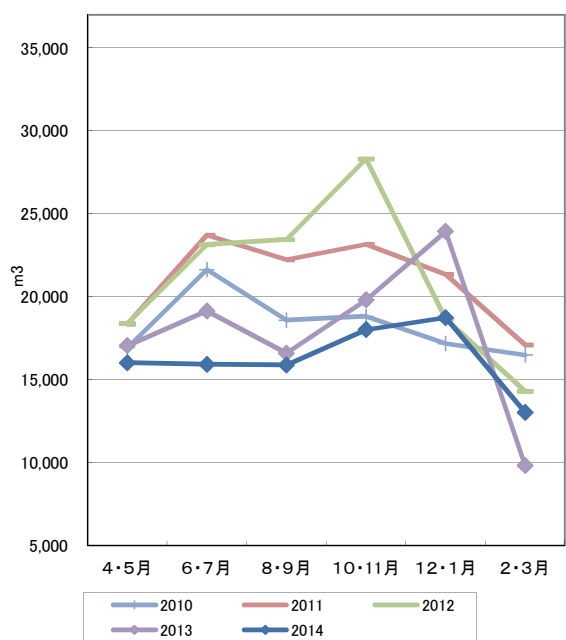
3. 合計使用量

[単位: m³]

| | 区分 | 年度 | 4・5月 | 6・7月 | 8・9月 | 10・11月 | 12・1月 | 2・3月 | 合計 |
|-------------|---------|--------|--------|--------|--------|--------|--------|---------|--------|
| 川津 キャンパス | 共通 | 2010 | 8,503 | 9,741 | 9,324 | 9,141 | 7,773 | 9,318 | 53,800 |
| | | 2011 | 9,302 | 12,024 | 11,537 | 11,552 | 9,876 | 8,059 | 62,350 |
| | | 2012 | 9,580 | 11,873 | 9,832 | 14,592 | 8,323 | 6,151 | 60,351 |
| | | 2013 | 7,283 | 7,246 | 4,057 | 9,879 | 11,878 | 1,748 | 42,091 |
| | | 2014 | 6,712 | 5,922 | 6,497 | 7,640 | 9,201 | 6,213 | 42,185 |
| | 法文学部 | 2010 | 244 | 453 | 299 | 483 | 464 | 350 | 2,293 |
| | | 2011 | 394 | 405 | 302 | 450 | 430 | 325 | 2,306 |
| | | 2012 | 396 | 520 | 707 | 1,307 | 1,079 | 366 | 4,375 |
| | | 2013 | 375 | 379 | 291 | 455 | 444 | 1,283 | 3,227 |
| | | 2014 | 387 | 407 | 301 | 427 | 428 | 321 | 2,271 |
| | 教育学部 | 2010 | 911 | 1,076 | 688 | 1,035 | 947 | 637 | 5,294 |
| | | 2011 | 903 | 1,006 | 768 | 954 | 999 | 808 | 5,438 |
| | | 2012 | 1,141 | 1,165 | 937 | 1,428 | 1,468 | 1,317 | 7,456 |
| | | 2013 | 1,745 | 2,056 | 2,209 | 2,130 | 2,008 | 1,600 | 11,748 |
| | | 2014 | 1,938 | 2,119 | 1,681 | 1,342 | 1,647 | 1,179 | 9,906 |
| | 総合理工学 | 2010 | 4,373 | 5,985 | 3,543 | 4,207 | 3,881 | 3,137 | 25,126 |
| | | 2011 | 3,765 | 5,880 | 5,657 | 5,975 | 5,851 | 3,963 | 31,091 |
| | | 2012 | 4,150 | 5,192 | 8,038 | 6,609 | 4,023 | 3,173 | 31,185 |
| | | 2013 | 3,875 | 4,621 | 6,123 | 3,275 | 5,995 | 2,762 | 26,651 |
| | | 2014 | 3,676 | 3,688 | 4,074 | 5,066 | 4,319 | 2,845 | 23,668 |
| | 生物資源科学部 | 2010 | 2,906 | 4,382 | 4,726 | 3,954 | 4,111 | 3,054 | 23,133 |
| | | 2011 | 3,986 | 4,398 | 3,970 | 4,230 | 4,184 | 3,946 | 24,714 |
| | | 2012 | 3,124 | 4,389 | 3,934 | 4,368 | 3,779 | 3,291 | 22,885 |
| | | 2013 | 3,776 | 4,841 | 3,915 | 4,073 | 3,614 | 2,440 | 22,659 |
| | | 2014 | 3,310 | 3,788 | 3,328 | 3,541 | 3,141 | 2,471 | 19,579 |
| 小計 | 2010 | 16,937 | 21,637 | 18,580 | 18,820 | 17,176 | 16,496 | 109,646 | |
| | 2011 | 18,350 | 23,713 | 22,234 | 23,161 | 21,340 | 17,101 | 125,899 | |
| | 2012 | 18,391 | 23,139 | 23,448 | 28,304 | 18,672 | 14,298 | 126,252 | |
| | 2013 | 17,054 | 19,143 | 16,595 | 19,812 | 23,939 | 9,833 | 106,376 | |
| | 2014 | 16,023 | 15,924 | 15,881 | 18,016 | 18,736 | 13,029 | 97,609 | |
| 附属学校 | 2010 | 1,566 | 3,336 | 1,694 | 1,761 | 1,647 | 1,586 | 11,590 | |
| | 2011 | 1,513 | 3,652 | 1,535 | 1,545 | 1,625 | 1,632 | 11,502 | |
| | 2012 | 1,837 | 2,018 | 1,388 | 1,466 | 1,428 | 1,436 | 9,573 | |
| | 2013 | 1,425 | 2,446 | 1,405 | 1,611 | 1,611 | 1,436 | 9,934 | |
| | 2014 | 1,448 | 3,119 | 1,219 | 1,505 | 1,603 | 1,599 | 10,493 | |

※本庄農場(測定設備無し)

水消費量(川津)



水消費量(附属学校)

